

MEMBER



Rera No: K-RERA/PRJ/000/2024 | www.rera.kerala.gov.in



VISHRAAM
— we build smiles —



VISHRAAM
— we build smiles —

UNFOLD THE
THRILLS OF
CITY
LIVING



Near Punkunnam Junction, Thrissur, Kerala - 680 002.

Mob: +91 75919 75919

E-mail: mail@vishraam.com | www.vishraam.com

ON GOING

VISHRAAM
TYKHE

Thykoodam, Kochi

VISHRAAM
UTSAV
Celebrating Life

Near Indoor Stadium

VISHRAAM
Lime *lite*
The fine art of Happiness

Viyyur, Thrissur

VISHRAAM
OPUS
Pulsating Lifestyle

Punkunnam

VISHRAAM
PRAANA

Near Amala Hospital, Thrissur

www.vishraam.com

VISHRAAM
CityLite

PUNKUNNAM, THRISSUR



FROM A BUILDER WHO RESONATES QUALITY & TRANSPARENCY

Built on years of experience Vishraam Builders, is synonymous with perfection and luxury. One of the leading real estate developers, Vishraam Builders, has a sterling legacy of building high-quality homes delivered on time with transparency over the past two decades. Today, in its pursuit to reach greater heights and create more luxury benchmarks, Vishraam Builders brings one more exclusive address - Vishraam CityLite

50 PROJECTS

30000+

Happy Customers

24 YEARS

AND OUR LEGACY IS STILL GROWING

| | | | | | | |
|--------------------|-----------|-----------|--------------------------|----------|----------|----------|
| LAND AREA IN CENTS | | | | | | 25 |
| NO OF APARTMENTS | | | | | | 24 |
| BUILT UP AREA | | | | | | 35337 |
| BASEMENT FLOOR | | | PARKING AND SERVICES | | | |
| GROUND FLOOR | | | PARKING, LOBBY, SERVICES | | | |
| | A | B | C | D | E | F |
| | 3 BHK | 2 BHK | 3 BHK | 2 BHK | 2 BHK | 2 BHK |
| 1 | 1491 sqft | 1035 sqft | 1257 sqft | 937 sqft | 909 sqft | 877 sqft |
| 2 | 1491 sqft | 1035 sqft | 1257 sqft | 937 sqft | 909 sqft | 877 sqft |
| 3 | 1491 sqft | 1035 sqft | 1257 sqft | 937 sqft | 909 sqft | 877 sqft |
| 4 | 1491 sqft | 1035 sqft | 1257 sqft | 937 sqft | 909 sqft | 877 sqft |

WELCOME TO A WORLD
 THAT UNITES GENERATIONS
 WITH ITS PERFECTLY
 BALANCED LIFE



Educational
 Institutions
 nearby



Convenience
 Stores in
 close proximity



Centralised
 Gas
 Connection



Generator
 Back-up



Landscaped
 Garden



Most buzzing
 part of the
 township

Bespoke Residences

VISHRAAM
CityLite

PUNKUNNAM, THRISSUR

2 & 3 BHK



A PRECIOUS BALANCE OF DESIGN AND FUNCTIONALITY

Vishraam Citylite is conceived with the concept of modern living where you can enjoy the best of both worlds.

Lush green views, wide open spaces, smart designs, sense of community, convenient to work, everything is well thought out and planned just for you.

DESIGNED EXCLUSIVELY FOR YOU

FOUNDATION

- R.C.C Cast in situ bored piles as per the soil strata and design

STRUCTURE

- R.C.C framed Structure ,Solid Block masonry and with cement Plaster

DOORS

- **Main door:** Ready made - Door jambs & Both side laminated pre hung flush door shutter, including all necessary fittings
- **Bed room door :** Ready made door - Wpc frame with skin shutter, including all necessary fittings
- **Toilet door:** Ready made door - With Wpc frames and good quality door shutters, including all necessary fittings

INTERNAL WALL & CEILING

- **Ceiling** finish with two coat Cement based putty,one coat primer and two coat distemper with roller **finish**
- Internal wall finish with two coat Cement based putty,one coat primer and two coat distemper with roller **finish**

WINDOWS

- **Windows with sliding & openable type, Sliding doors, ventilators** of aluminium powder coated sections/Upvc sections

FLOORING

- Entrance, Living, Dining, Bed rooms, Kitchen, W.A, etc : Flooring & skirting with 60X60 cm vitrified tiles -9 mm thickness
- **Toilet :** Ceramic Floor tiles 60 X60cm for toilet floor & glazed tile 30X45 cm dadoing upto a height of 7 feet
- **Kitchen counter slab :** Kitchen counter frame with GP coated rectangular tube section and jet black granite slab - top & bottom with chamfering edges & glazed tile dado upto 60 cm height .
- **Balcony, Garden :** Rustic floor tiles 30X30/or 45X45 CM

ELECTRICAL

- Modular Switches & Sockets providing as per drawing
- Concealed wiring with FRLS cables

PLUMBING & SANITARY

- **M.Toilet :** Floor mount EWC-,with cistern/flush tank, half pedestal wash basin- and CP items -2 in 1 wall mixer ,Over head shower rose with arm. Pillar cock ,angle cock, health faucet etc.
- **Bed 2 &Bed 3 Toilet :** Floor mount EWC-, half pedestal wash basin-, and CP items - 2 in 1 wall mixer, Over head shower rose with arm, Pillar cock, angle cocks and health faucet etc.
- **Dining :** Wash basin with Half pedestal, Pillar cock, and glazed tile dado upto 60 cm
- **Kitchen :** Single bowl without drain board steel sink .Sink cock swanneck pillar cock/with long body

FALSE CEILING

- **Toilets :** False ceiling with powder coated GI frames with PVC grid tile sheet 60x60 cm size

SOURCE OF WATER SUPPLY

- Bore well/ Open well source ,through sump and pumping to Over head tank and distribution from OHT

HANDRAILS

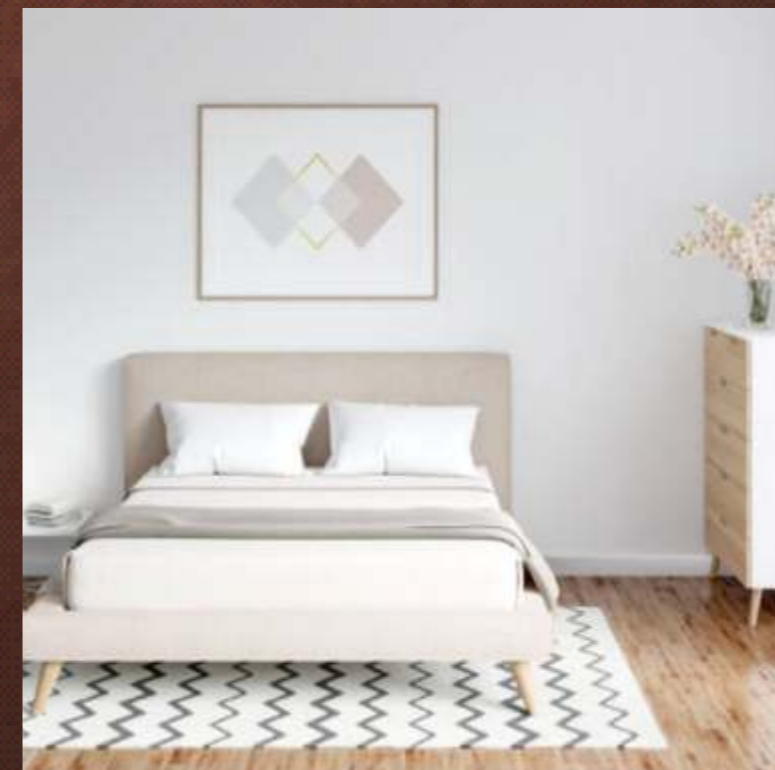
- **Hand rails :** GP coated hand rails for Staircase and Balconies with 16 gauge sections with enamel painted

EXTERNAL FINISH

- **External** wall finish with one coat primer, two coat Weathershield Emulsion paints

LIFTS

- 1 No of 8 Passengers lift

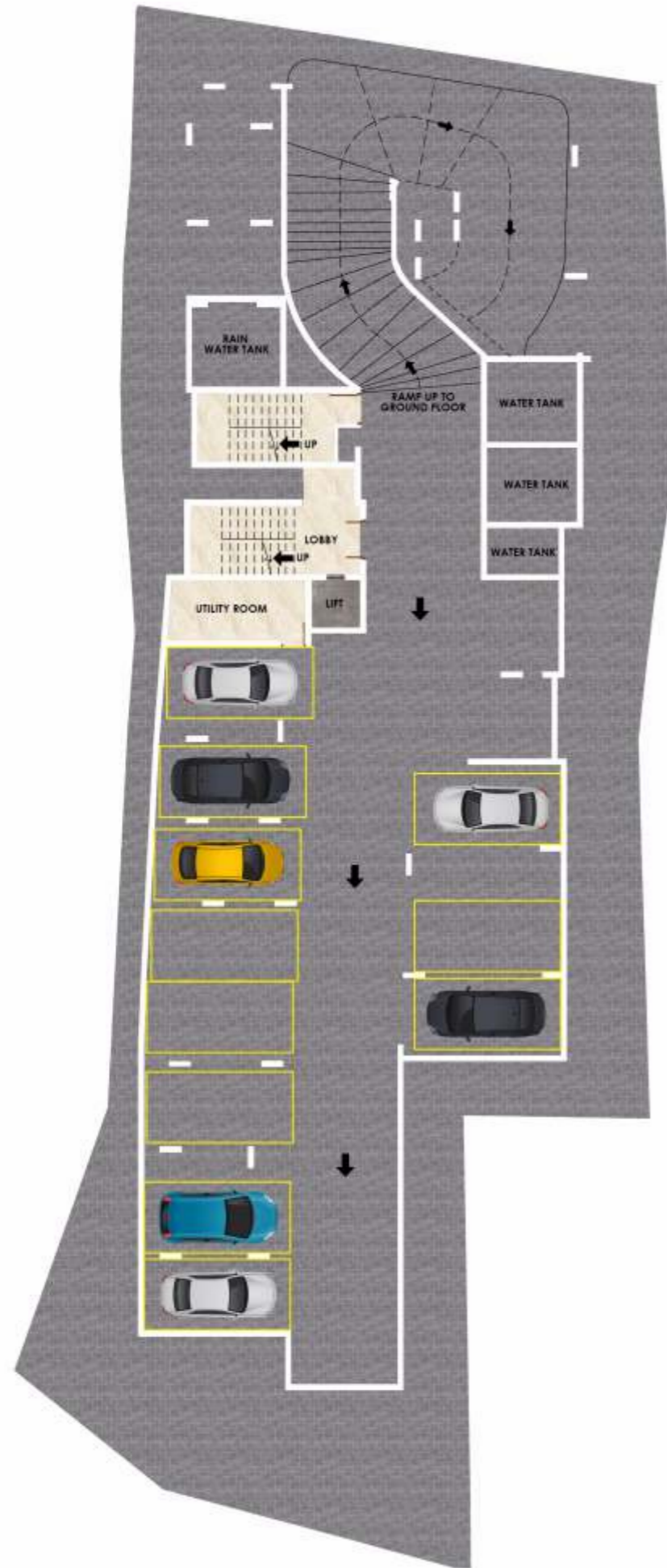


A LOCATION THAT PUTS YOU IN THE CENTER OF EVERYTHING

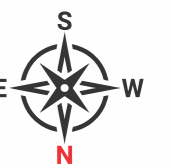
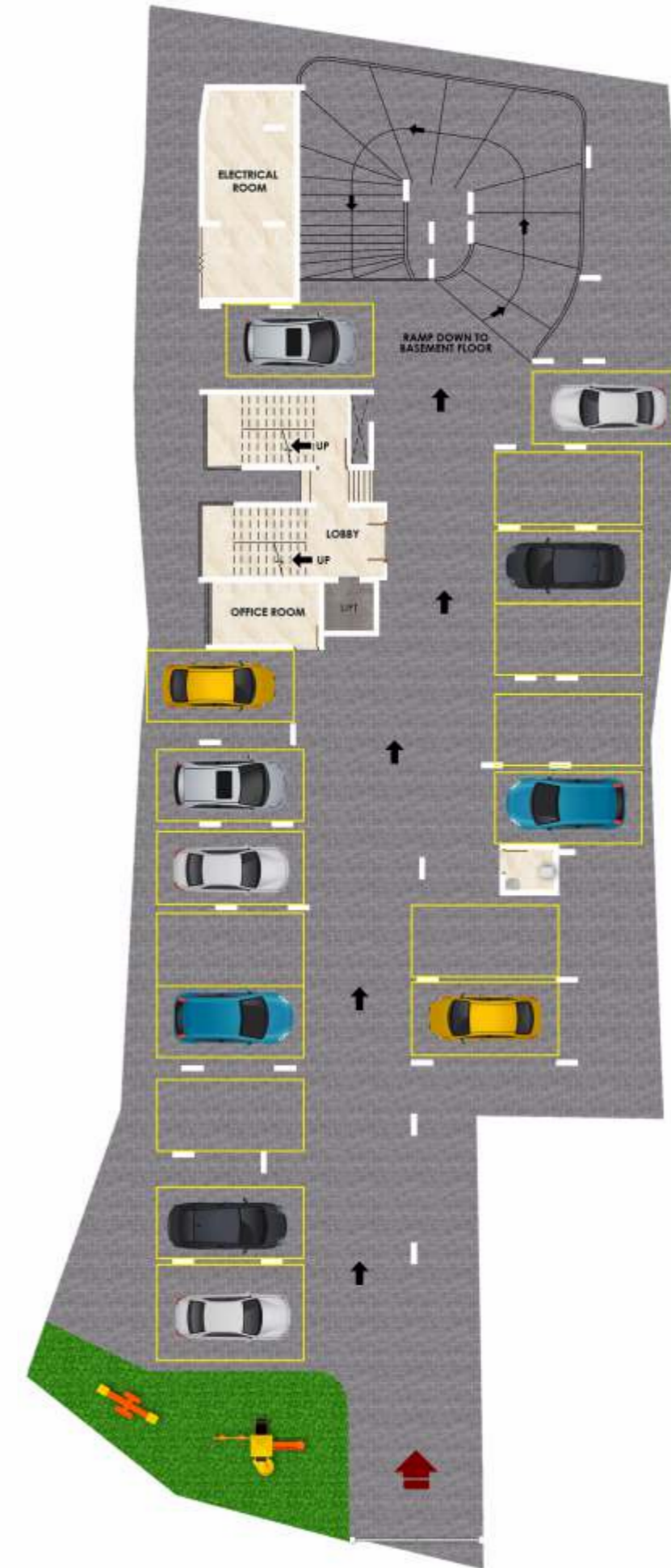
Life at Vishraam Citylite is crafted to fill yours with ultimate convenience. Here, everything you need is a quick drive away. Premium restaurants, luxury hotels, shopping districts, hospitals, or educational institutes – all your lifestyle needs, right around the corner.



Basement Floor Plan



Ground Floor Plan



Type-A - 3 BHK



| AREA STATEMENT | | |
|------------------|--------------|--------------|
| Sub Builtup Area | Carpet Area | Balcony Area |
| 1491 Sq. ft. | 1029 Sq. ft. | 63 Sq. ft. |

Type-B - 2 BHK



| AREA STATEMENT | | |
|------------------|-------------|--------------|
| Sub Builtup Area | Carpet Area | Balcony Area |
| 1035 Sq. ft. | 682 Sq. ft. | 54 Sq. ft. |

Type-C - 3 BHK



| AREA STATEMENT | | |
|------------------|-------------|--------------|
| Sub Builtup Area | Carpet Area | Balcony Area |
| 1257 Sq. ft. | 859 Sq. ft. | 58 Sq. ft. |



Type-D - 2 BHK



| AREA STATEMENT | | |
|------------------|-------------|--------------|
| Sub Builtup Area | Carpet Area | Balcony Area |
| 931 Sq. ft. | 631 Sq. ft. | 48 Sq. ft. |



Type-E - 2 BHK



| AREA STATEMENT | | |
|------------------|-------------|--------------|
| Sub Builtup Area | Carpet Area | Balcony Area |
| 908 Sq. ft. | 603 Sq. ft. | 48 Sq. ft. |



Type-F - 2 BHK



| AREA STATEMENT | | |
|------------------|-------------|--------------|
| Sub Builtup Area | Carpet Area | Balcony Area |
| 877 Sq. ft. | 594 Sq. ft. | 35 Sq. ft. |

